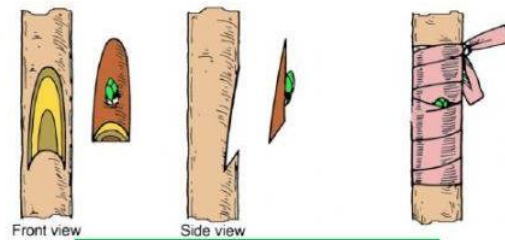


**WORKSHEET- Reproduction in Plants**

**I. Directions: Tell whether each sentence is TRUE or FALSE about plant propagation. Type your answer in the box.**

- \_\_\_\_\_ 1. There are two types of plant propagation; sexual and asexual.
- \_\_\_\_\_ 2. Seedlings are young plants grown from seeds.
- \_\_\_\_\_ 3. Cutting is a method done by detaching a part of a plant such as stem, leaf, or root from a mother plant to produce new plants.
- \_\_\_\_\_ 4. Grafting is also known as air layering.
- \_\_\_\_\_ 5. Marcotting is a process done by joining one or more plants to form a single plant.

**II. Directions: Analyze each illustration below and determine the type of plant propagation it implied. Select your answer from the box.**



6.



7.



8.

III Asexual reproduction:

In asexual reproduction, only \_\_\_\_\_ parent is required to make new offspring. The offspring will look the same as the parent and they will share the same \_\_\_\_\_ . They are \_\_\_\_\_ of one another.

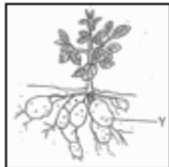
Task 1: Label the types of asexual reproductive methods in the different plants below.



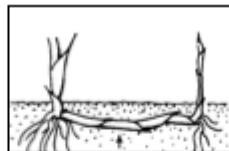
-----



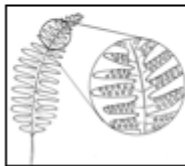
-----



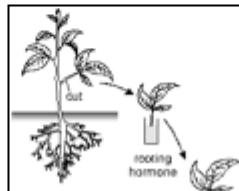
-----



-----

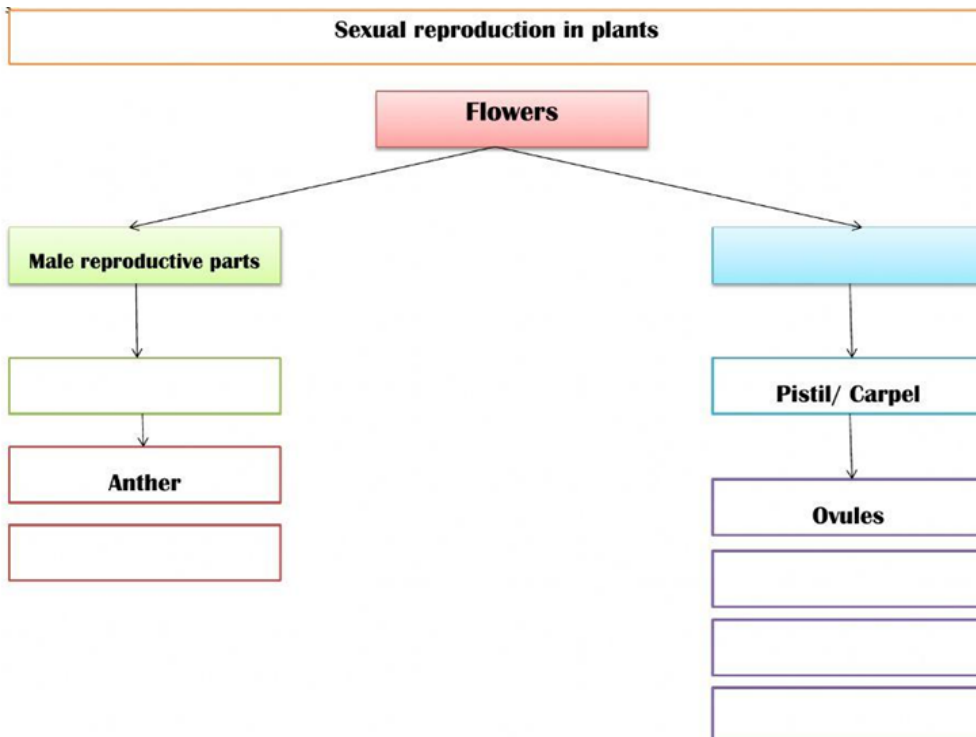


-----

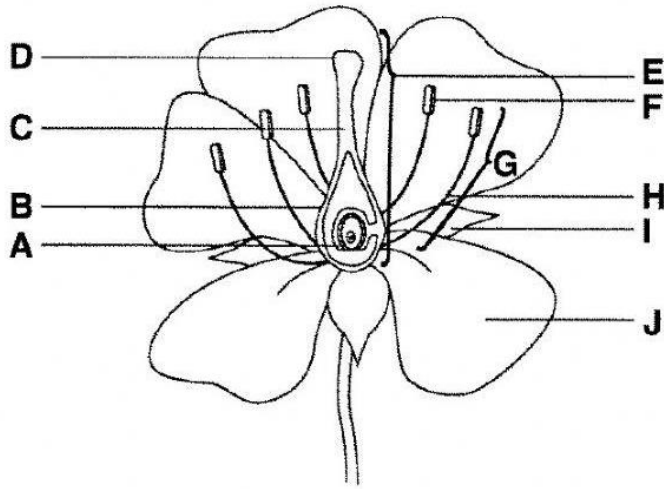


-----

IV Complete the given mind map with the appropriate answer.



V Label the parts of a flower



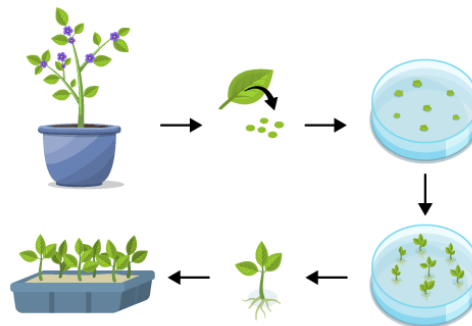
a. Label the following parts of the flower A-J (5)

- A \_\_\_\_\_
- B \_\_\_\_\_
- C \_\_\_\_\_
- D \_\_\_\_\_
- E \_\_\_\_\_
- F \_\_\_\_\_
- G \_\_\_\_\_
- H \_\_\_\_\_
- I \_\_\_\_\_
- J \_\_\_\_\_

VI Identify the type of artificial methods of reproduction in plants.



a) \_\_\_\_\_



b) \_\_\_\_\_